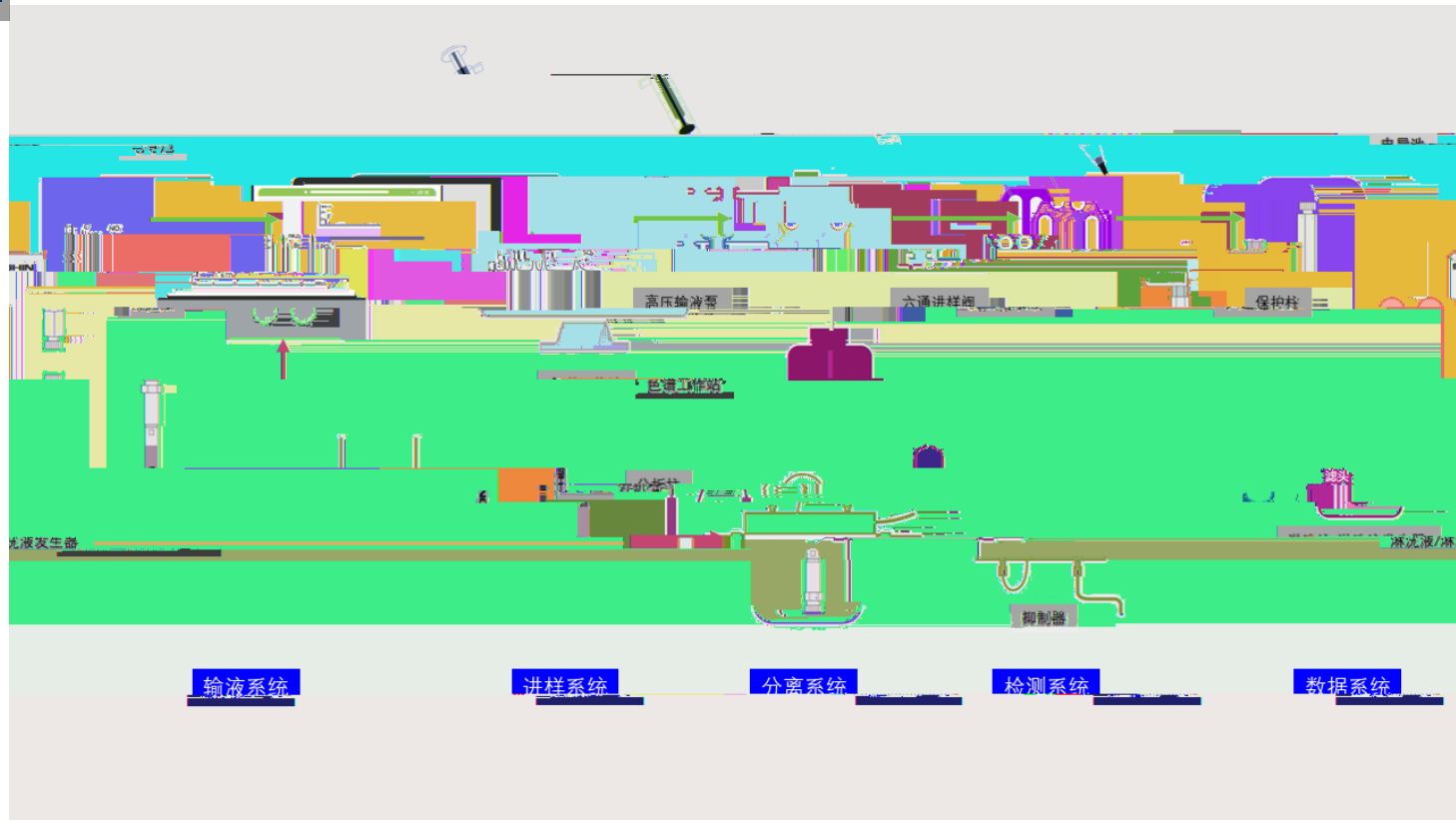




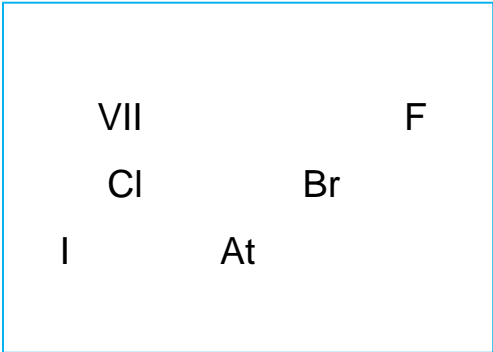
应用行业

/	/	/ / /
		/
		/
/	/	/
/	/	/ /
		/ /
		/ /
		/
		/ /
		/
		/HPW
/	/	/ /
/	/	/





Halogen

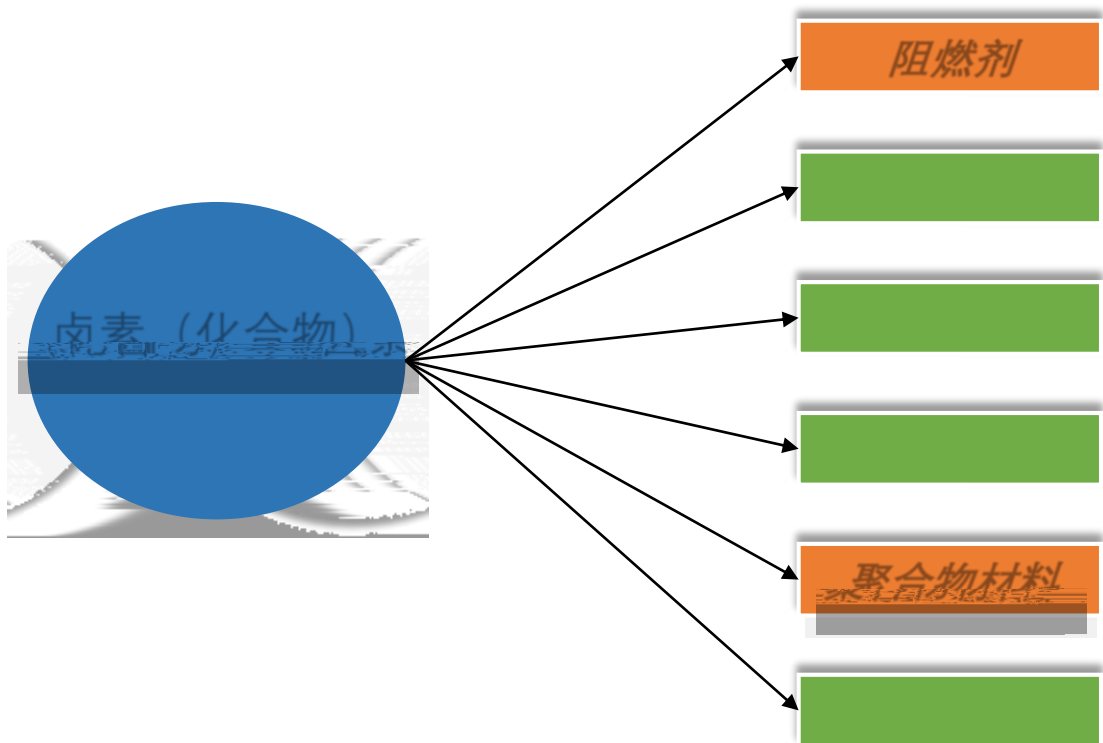


F Cl Br

Z

PCB

典型应用



	PBB PBDE TBBPA A		

Polyvinyl Chloride PVC

PVC

—

—

—

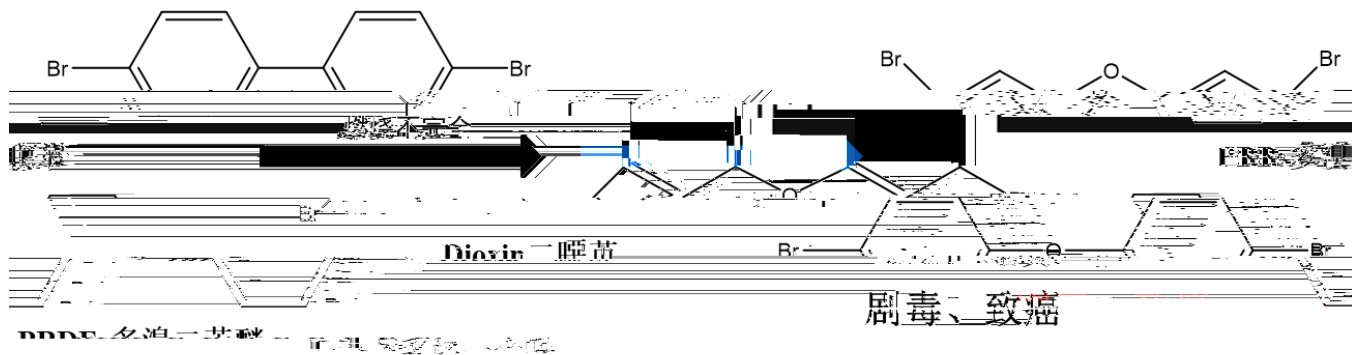


外器不当



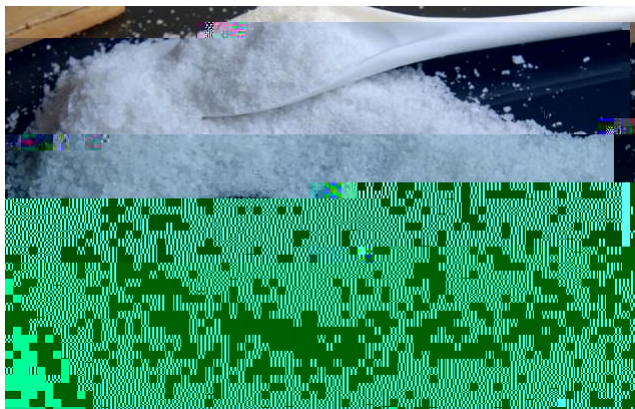
SHINE
盛瀚

SHINE
盛瀚



130

900



NaCl

“无卤化”

EN European Norm 61249-2-21:2003

IEC International Electrotechnical Commission 61249-2-21:2003

Cl 900ppm

Br 900ppm

Br Cl

1500ppm

“ ”

有害物质限制情况

4

RoHS

0.1%

3 (Halons)

(HCB)

(PCBs)

(PCDDs)

(PCDFs)

IEC 61249-2-21 2003

900ppm

900ppm

Br Cl

1500ppm

2016 12 31

2019 7 22

REACH

Reach

SVHC

4

3

C10-13

(2-)

“中國RoHS法規”

2002

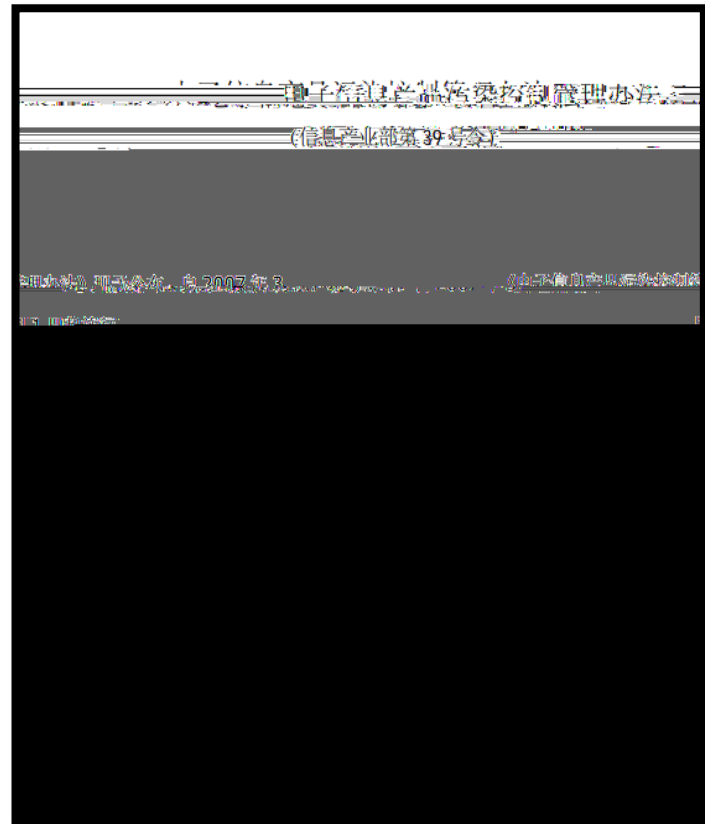
7

2006 2 28

“

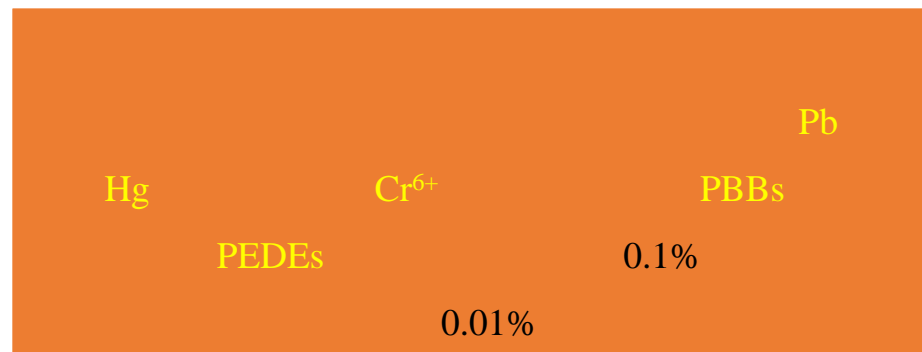
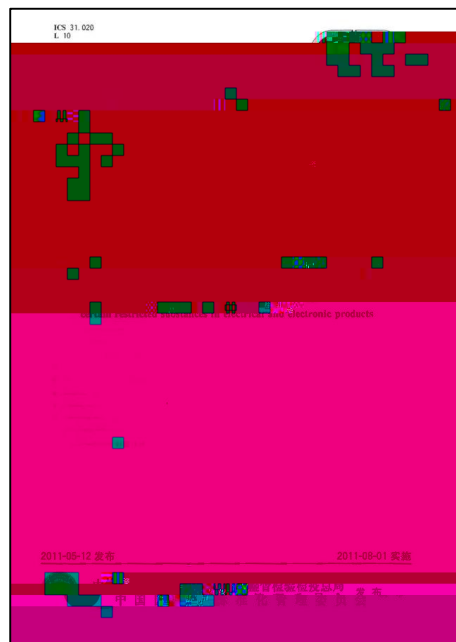
RoHS

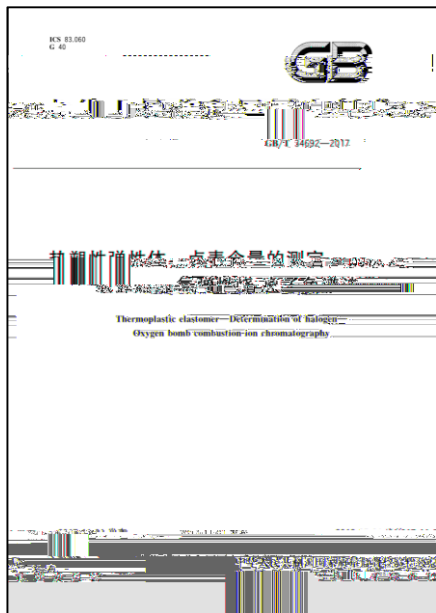
”

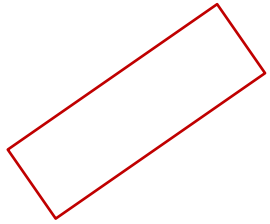


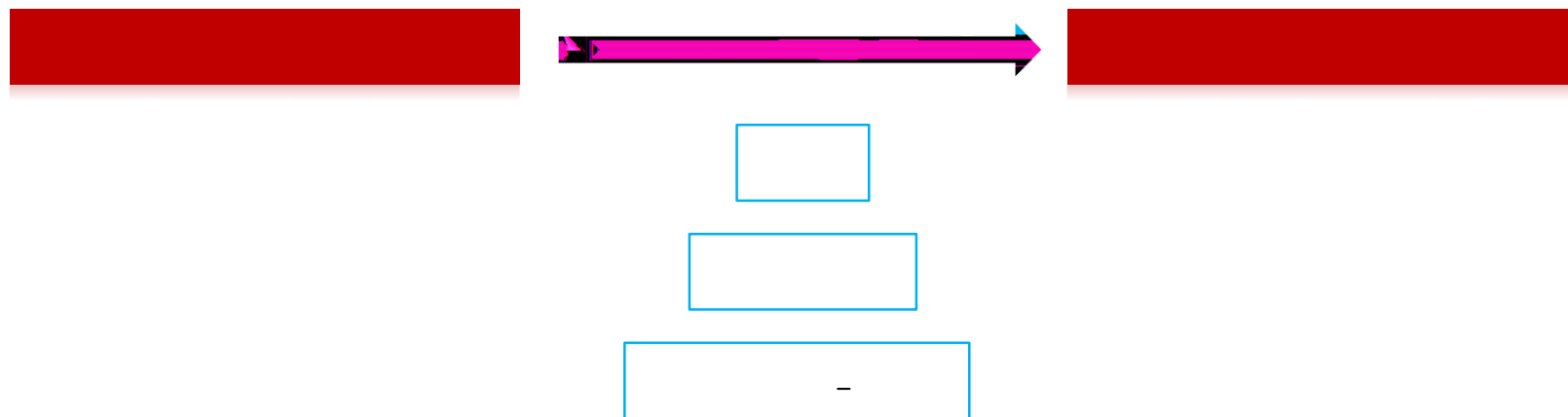


GB 26572-2011









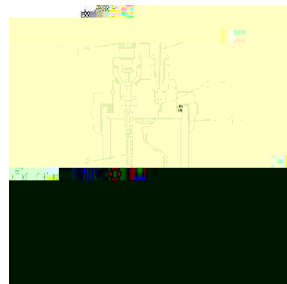
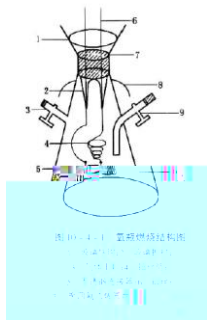
1、氧弹/氧瓶燃烧

2、气合/管式炉燃烧

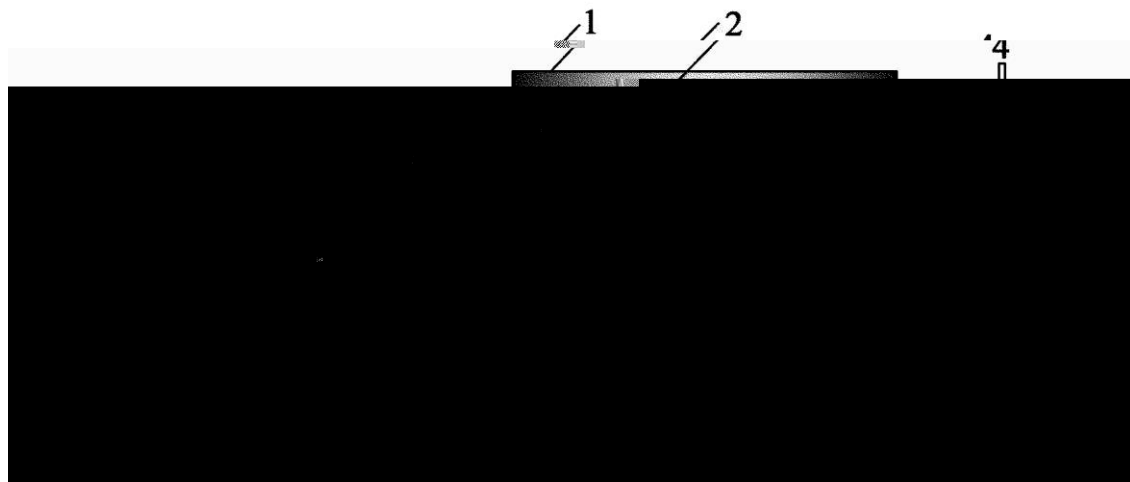
3、高温水裂解

1、氧弹/氧瓶燃烧

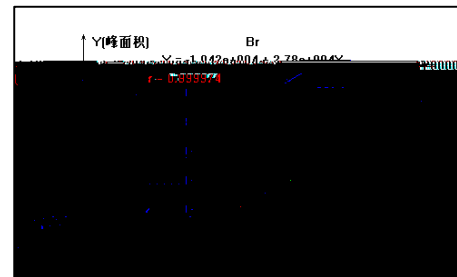
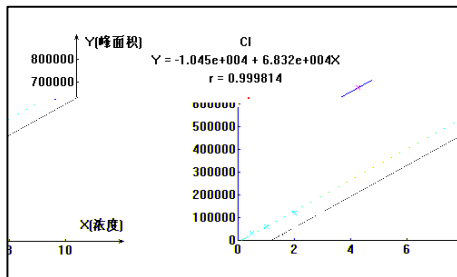
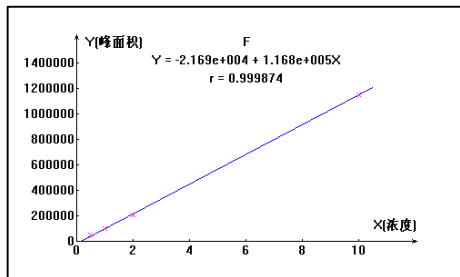
50mg

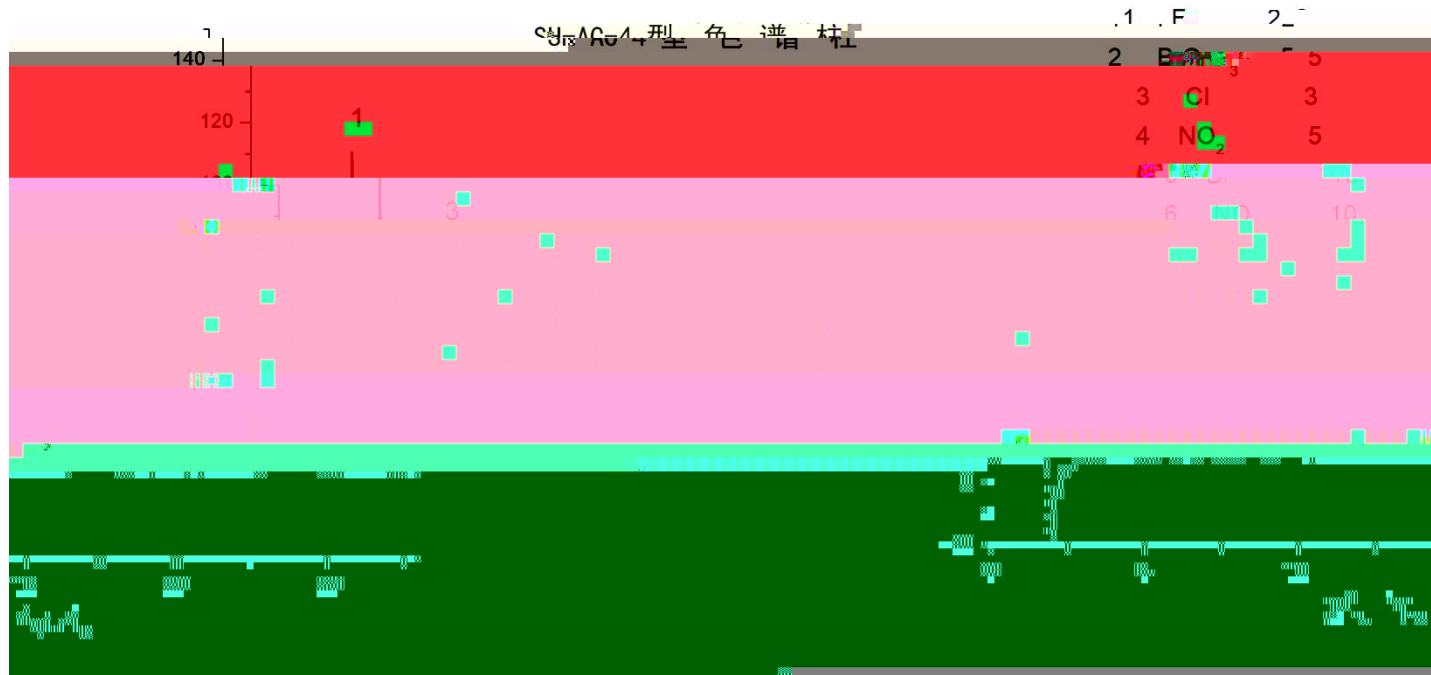


2、氨仓/管式炉燃烧

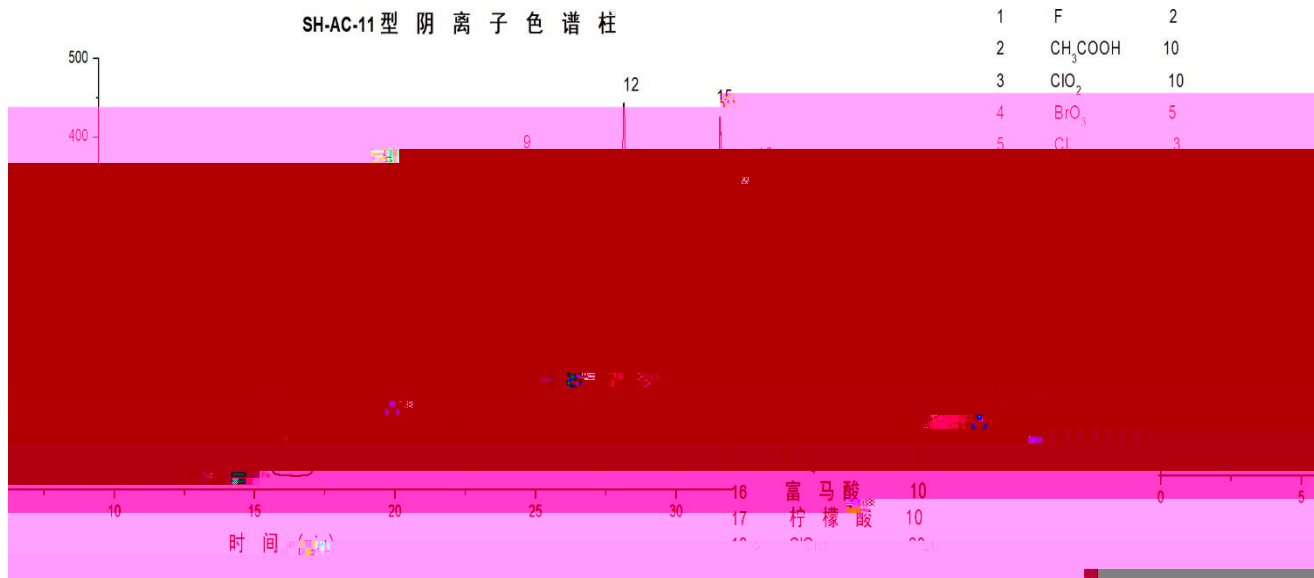


		CIC-D120	μL	25
		SH-AC-4/SH-AC-9		SHY-A-6
		2.4mmolNa ₂ CO ₃ +6.0NaHCO ₃	mL/min	1.5
	()	35	()	35

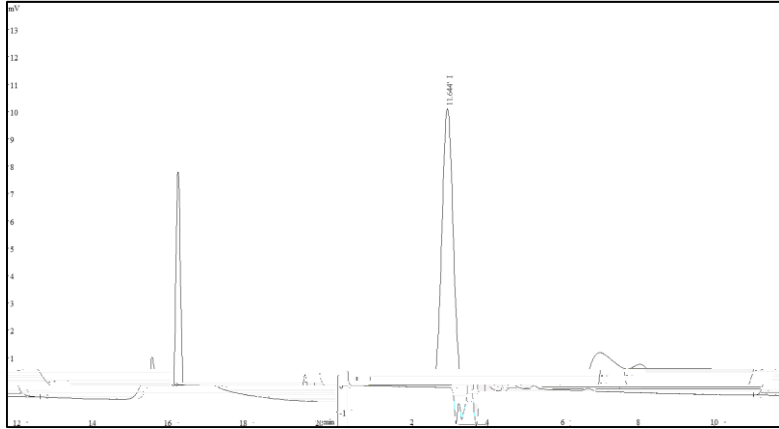




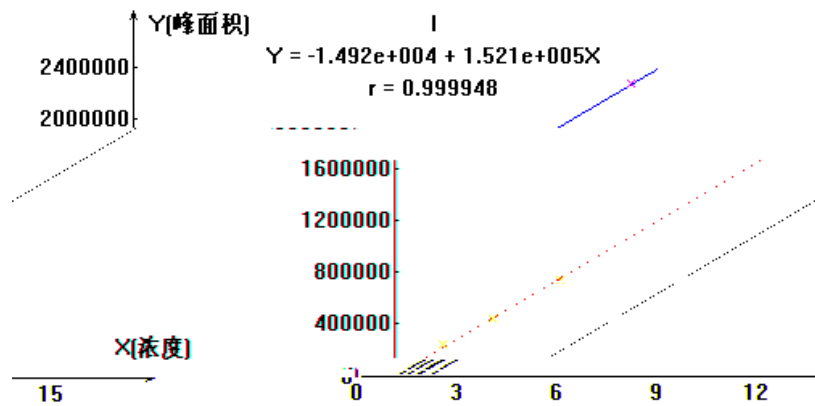
SH-AC-11型 阴离子色谱柱



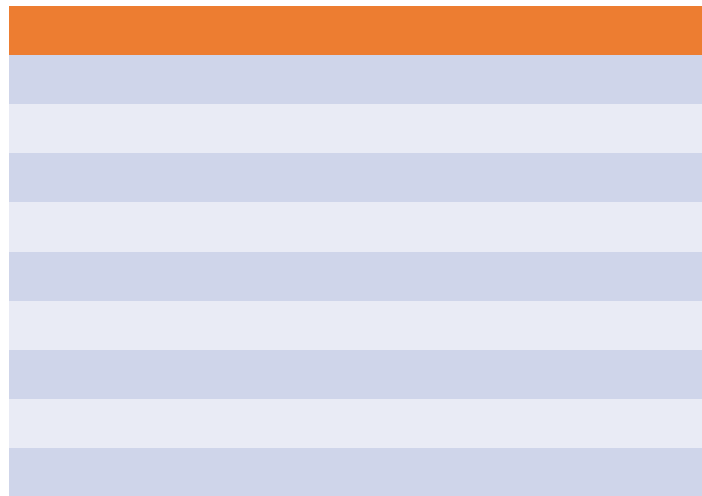
碘离子专用柱



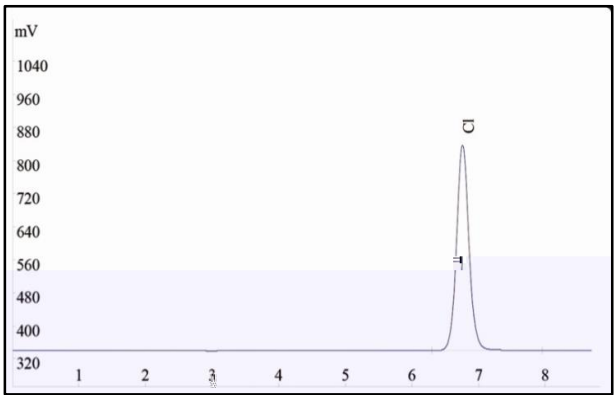
CIC-D160
25 μ L
2
1.5mL/min
30
35
75mA
6.0mM KOH
SH-AC-17



	/ppm		3	/ppb
I	1.5-15.0	$Y = -1.492e+004 + 1.521e+005X$	0.999948	3.37

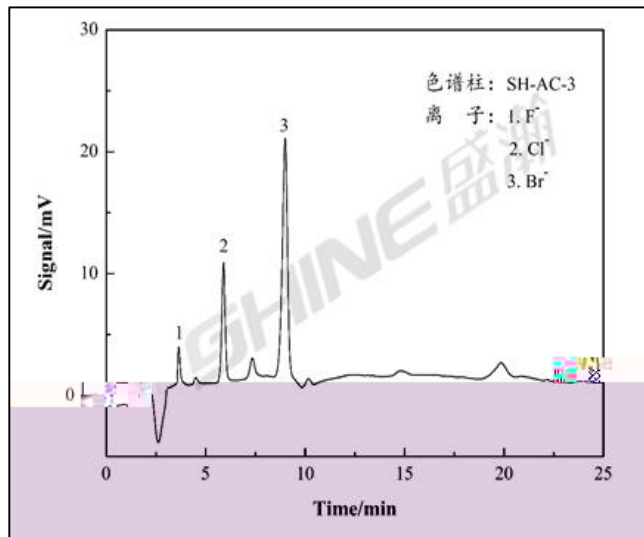


Cl

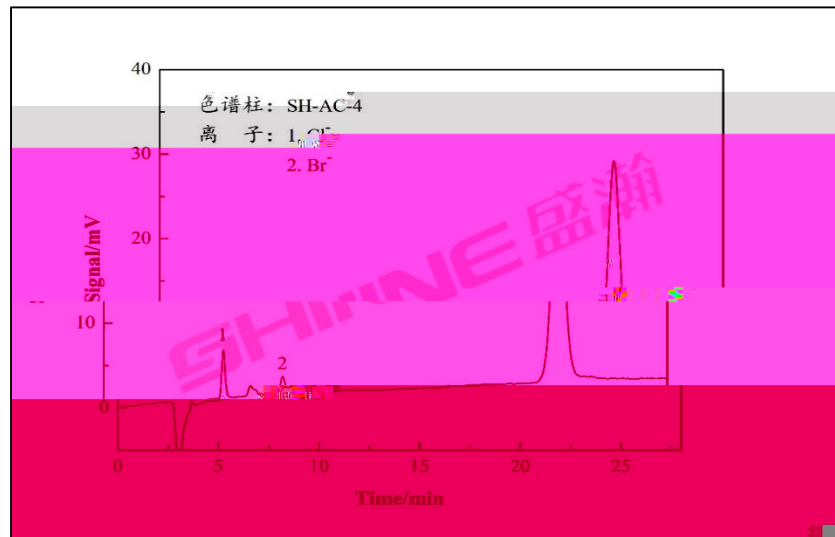


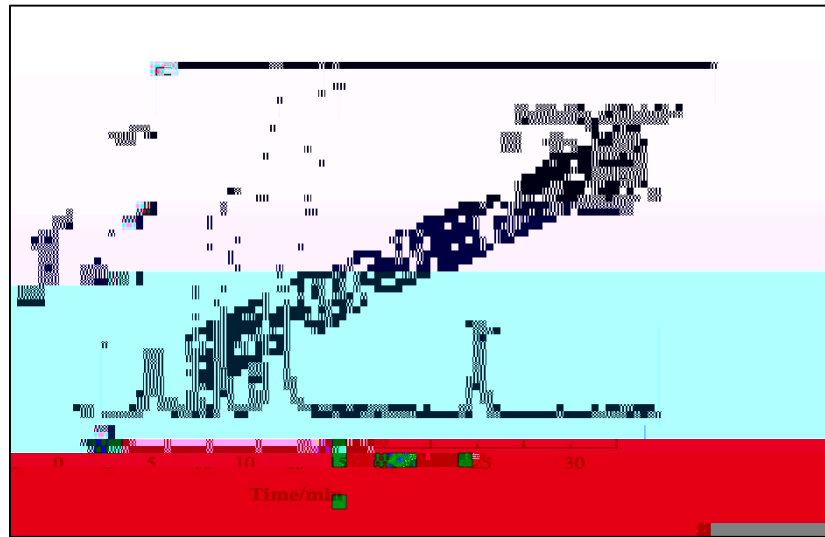
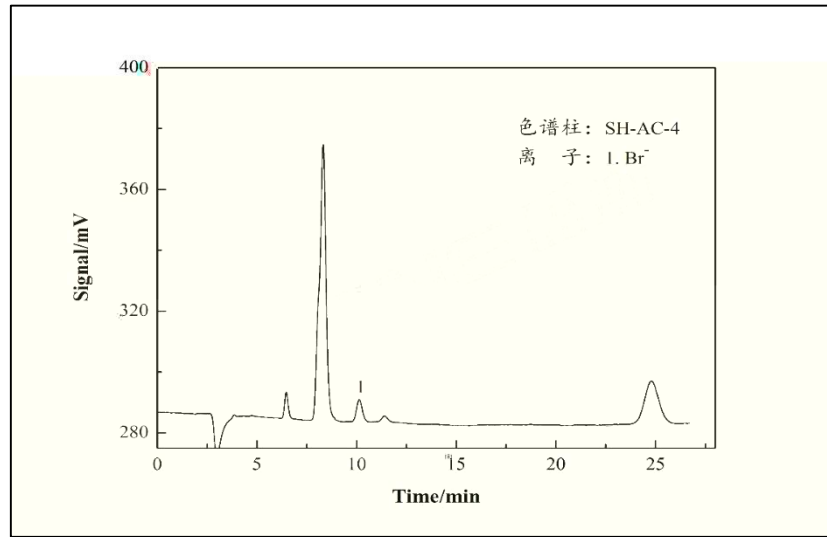
		mg	mg/kg		
(Cl)	1	19.7	193.5	102.2	
	2	20	188.2	99.4	
	3	19.4	193.1	102.0	
	4	19.9	188.1	99.4	
	5	17.6	190.8	100.7	
				190.7	100.7
				2.6	
	RSD%			1.4	

PCB



PCB







Q&A

